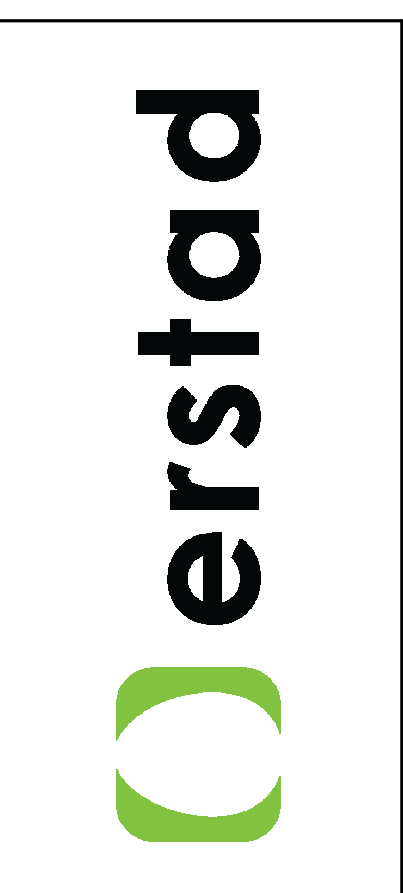
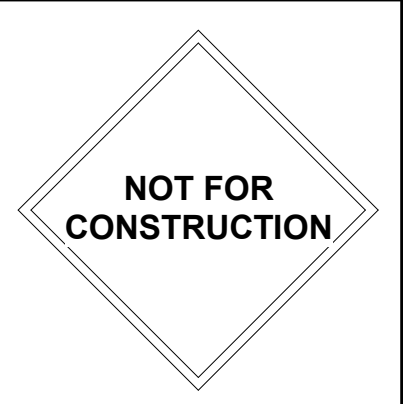


**SITE INFORMATION**  
 ADDRESS: 270 E 50TH STREET, GARDEN CITY, ID 83714  
 PARCEL: R1055420160  
 SIZE: 1.810 ACRES  
 ZONE: C-2

**SETBACKS** (SEE SITE PLAN FOR COMPLIANCE)  
 FRONT: 5'-0" MIN  
 SIDE INTERIOR: 5'-0" MIN  
 REAR: 5'-0" MIN

**PARKING**  
 REQUIRED (EXISTING CUP)  
 • OFFICE SPACE: 1 SPACE/300 SF = 13 SPACES  
 • WAREHOUSE/MANUFACTURING: 1 SPACE/2 EMPLOYEES ON LARGEST SHIFT + 1 SPACE FOR EVERY VEHICLE USED IN THE BUSINESS = 12 SPACES (24 EMPLOYEES ON LARGEST SHIFT, NO COMPANY VEHICLES)  
**TOTAL = 25 SPACES (1 ACCESSIBLE)**  
 PROVIDED  
 • OFFICE SPACE = 13 SPACES (NO CHANGE)  
 • WAREHOUSE/MANUFACTURING = 17 SPACES  
**TOTAL = 32 SPACES (2 ACCESSIBLE)**

**BUILDING**  
 EXISTING = 30,136 GSF (NOT INCLUDING 11,855 MEZZANINE)  
 • LEVEL 1 = 29,072 GSF  
 • LEVEL 2 = 1,064 GSF  
 NEW = 2,990 GSF  
 TOTAL = 33,126 GSF (NOT INCLUDING MEZZANINE)



This document is the property of erstad ARCHITECTS and is protected by U.S. and international laws. Use, reproduction, or modification of this document without first obtaining written permission of erstad ARCHITECTS is prohibited. This document may not be used in any unauthorized manner. ©2023

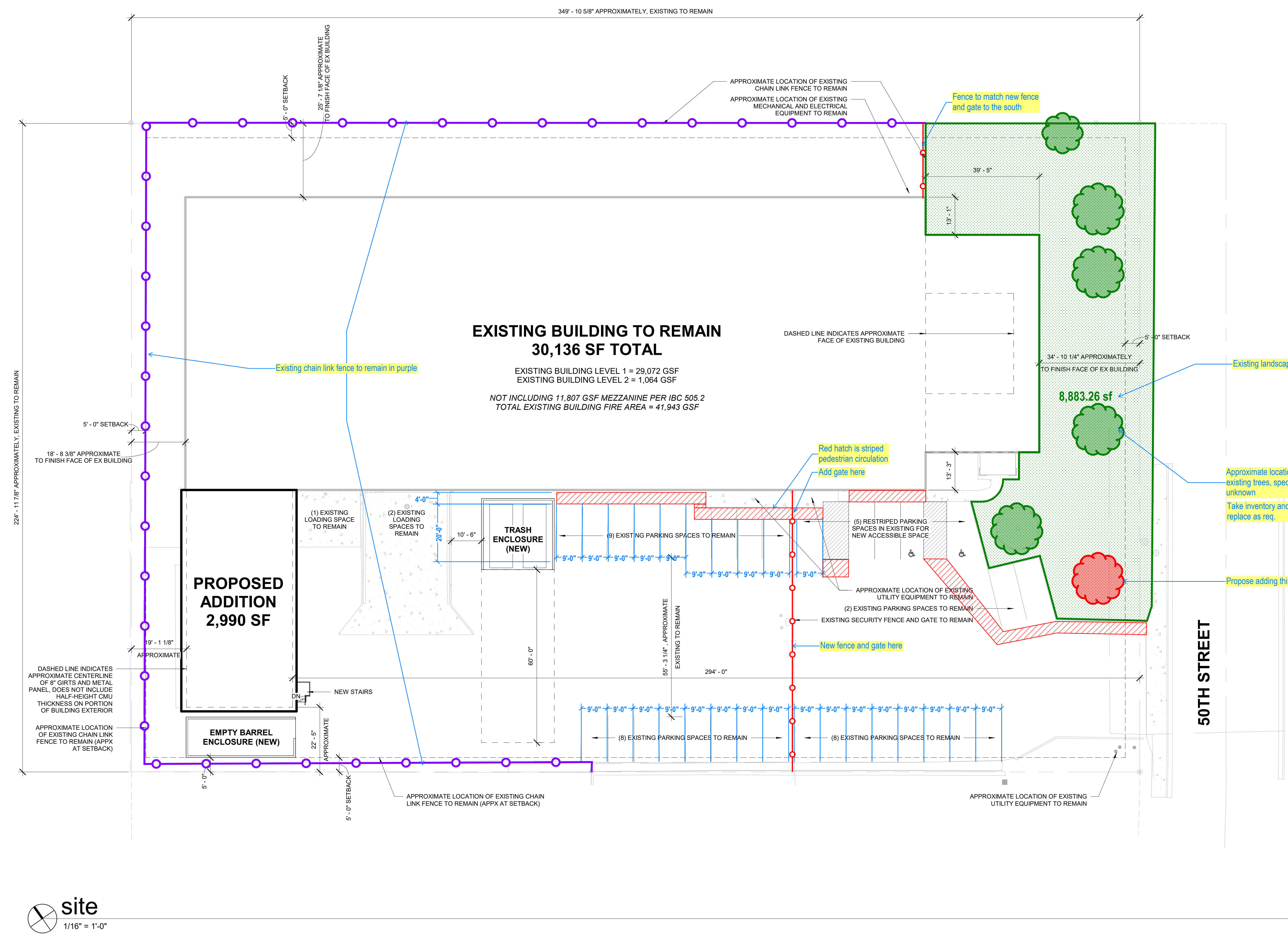
**mariposa labs expansion**  
 270 e 50th st garden city, id 83714

revision:		
no.	desc.	date

project: 241004  
 date: 1/30/2025  
 drawn: Author  
 checked: Checker

**design review**

**architectural site plan**  
**a1.11**



From original CUP  
 The lot size 78,750 sq. ft. requires 5% or 3,938 sq. ft. of landscaping of which 50% or 1,969 sq. ft. shall be sprinkled and vegetated.  
 The site plan depicts 19,443 sq. ft. of sprinkled vegetated landscaping including the following plant list:  
 → 8 ea. Crimson King Maple trees  
 → 112 ea. Potentilla  
 → 71 clusters of Crimson Pygmy Barberry  
 Sod as indicated on site plan and misc. bark chips and planters

Propose adding this tree per CUP to comply with tree req.

**keynote**

**general notes:**

- THIS SITE PLAN IS PROVIDED FOR GENERAL COORDINATION PURPOSES. REFER TO AND COORDINATE WITH RESPECTIVE CIVIL, LANDSCAPE, MECHANICAL, AND ELECTRICAL DRAWINGS FOR ADDITIONAL SPECIFIC INFORMATION.
- COORDINATE WITH CIVIL DRAWINGS FOR ALL UTILITY LOCATIONS, FINAL GRADING & DRAINAGE.
- CONTRACTOR TO VERIFY ALL LOCATIONS AND DIMENSIONS IN THE FIELD.
- RE: GEOTECH ENGINEERING REPORT FOR SOIL BEARING PRESSURES, EXISTING SOIL CONDITIONS, AND CONSTRUCTION CONSIDERATIONS.
- RE: LANDSCAPE DRAWINGS FOR PLANTINGS.
- RE: ELECTRICAL AND BUILDING ELEVATIONS FOR BUILDING MOUNTED EXTERIOR LIGHTING.