

**From:** [Jadon Schneider](#)  
**To:** [Pastoor, William](#)  
**Cc:** [planning](#); [McDannel, Konrad](#)  
**Subject:** Re: Republic Service comment  
**Date:** Thursday, October 10, 2024 11:40:29 AM  
**Attachments:** [image001.png](#)  
[image003.png](#)  
[image004.png](#)  
[image005.png](#)  
[image006.png](#)  
[image007.png](#)  
[image008.png](#)

---

Okay, that should work just fine for us. Thanks for taking the time to review it!

Warm regards,

**Jadon Schneider, P.E.**  
**Bronze Bow Land**  
Cell: (480) 232-2999  
<https://www.bronzebowland.com/>

On Thu, Oct 10, 2024 at 11:36 AM Pastoor, William <[WPastoor@republicservices.com](mailto:WPastoor@republicservices.com)> wrote:

Yes

---

**From:** Jadon Schneider <[jadon@bronzebowland.com](mailto:jadon@bronzebowland.com)>  
**Sent:** Thursday, October 10, 2024 11:15 AM  
**To:** Pastoor, William <[WPastoor@republicservices.com](mailto:WPastoor@republicservices.com)>  
**Cc:** [planning](#) <[planning@gardencityidaho.org](mailto:planning@gardencityidaho.org)>; [McDannel, Konrad](#) <[KMcDannel@republicservices.com](mailto:KMcDannel@republicservices.com)>  
**Subject:** Re: Republic Service comment

**This Message Is From an Untrusted Sender**

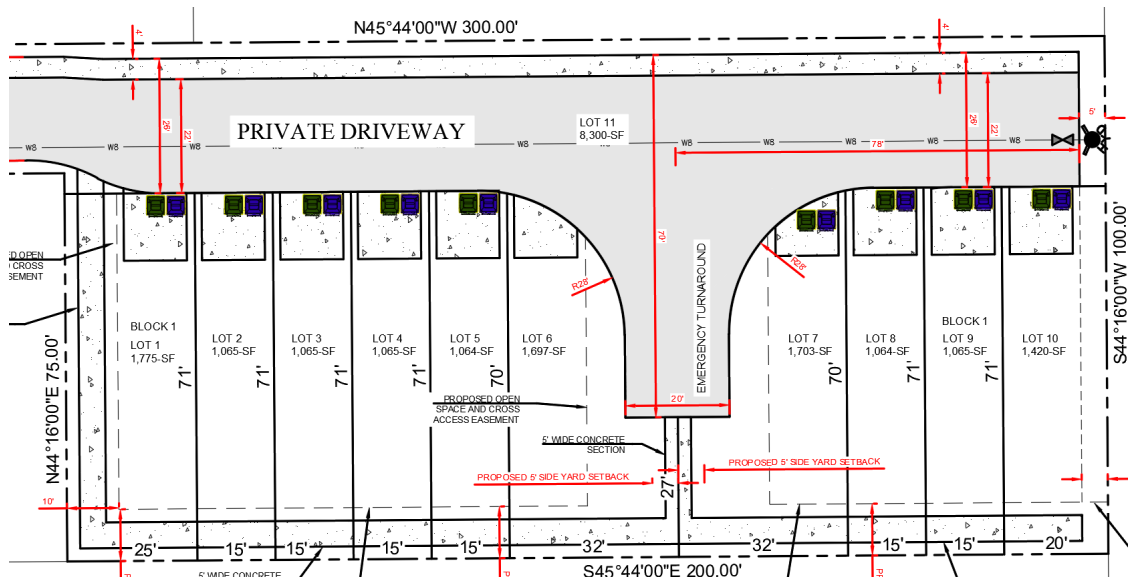
[Report Suspicious](#)

You have not previously corresponded with this sender.

Hi Bill,

Okay, so if im understanding correctly, it sounds like the best option would be to have all

the residents just put their carts in their own driveway similar to what is shown here. Is that correct?



Warm regards,

**Jadon Schneider, P.E.**

**Bronze Bow Land**

Cell: (480) 232-2999

<https://www.bronzebowland.com/>

On Thu, Oct 10, 2024 at 11:08 AM Pastoor, William <[WPastoor@republicservices.com](mailto:WPastoor@republicservices.com)> wrote:

Good morning Jadon,

I'm not sure how we got to this point. In our conversation we had mentioned that we could pick up the trash at each driveway and we would use the hammerhead to turn around. If we had all of the carts out at the roadway the driver would have to get out and manually empty each cart while setting on 44<sup>th</sup> St., we would be on 44<sup>th</sup> for about 10 minutes and there would be an extra charge. I'm not sure that the City would like this option though.

---

**From:** Jadon Schneider <[jadon@bronzebowland.com](mailto:jadon@bronzebowland.com)>  
**Sent:** Thursday, October 10, 2024 9:56 AM  
**To:** planning <[planning@gardencityidaho.org](mailto:planning@gardencityidaho.org)>  
**Cc:** Pastoor, William <[WPastoor@republicservices.com](mailto:WPastoor@republicservices.com)>; McDannel, Konrad <[KMcDannel@republicservices.com](mailto:KMcDannel@republicservices.com)>  
**Subject:** Re: Republic Service comment

**This Message Is From an Untrusted Sender**

[Report Suspicious](#)

You have not previously corresponded with this sender.

Hi there,

Bill and I had discussed this site once previously and I believe that the consensus from that discussion was that we would have the residential carts in the driveways (see attached). However, if it would be preferable to have the carts placed in the hammerhead area that should work fine for us. The only comment would be if the Fire Department is worried about having carts in their emergency turnaround area. I'm not sure if they typically have issues with that.

The attached "Subdivision Map" has some more dimensions as well but I can add more if necessary.

Please let me know what works best! Thank you.

Warm regards,

**Jadon Schneider, P.E.**

**Bronze Bow Land**

Cell: (480) 232-2999

<https://www.bronzebowland.com/>

On Thu, Oct 10, 2024 at 9:46 AM planning <[planning@gardencityidaho.org](mailto:planning@gardencityidaho.org)> wrote:

Good morning, Jadon

Please see the question below.

Thank you!



## Development Services

Development Services Department, **City of Garden City**

p: 208-472-2921

a: 6015 Glenwood Street, Garden City, ID 83714

w: [www.gardencityidaho.org](http://www.gardencityidaho.org)



---

**From:** Pastoor, William <[WPastoor@republicservices.com](mailto:WPastoor@republicservices.com)>

**Sent:** Wednesday, October 9, 2024 4:23 PM

**To:** McDannel, Konrad <[KMcDannel@republicservices.com](mailto:KMcDannel@republicservices.com)>; planning <[planning@GARDENCITYIDAHO.ORG](mailto:planning@GARDENCITYIDAHO.ORG)>

**Subject:** RE: Garden City Agency Notice

I just looked through all of the propertie

---

**From:** McDannel, Konrad <[KMcDannel@republicservices.com](mailto:KMcDannel@republicservices.com)>

**Sent:** Wednesday, October 9, 2024 11:37 AM

**To:** Pastoor, William <[WPastoor@republicservices.com](mailto:WPastoor@republicservices.com)>

**Subject:** FW: Garden City Agency Notice

Hi Bill – I made some comments in red. Thank you!

## **CITY OF GARDEN CITY AGENCY NOTICE**

Pursuant to Garden City Code 8-6A-7, you are hereby provided notice of the following application:

**SUBFY2024-0006:** Edgemere Subdivision - Combined Preliminary Plat and Final Plat processed as a Planned Unit Development - Jadon Schneider is requesting a 10 residential lot subdivision with 1 common lot. The property is currently located at 219 E. 44th Street; Ada County Parcel R2734500928 in the R-3 zoning district.

This property appears to have a hammer head area in which to empty residential carts. If that is indeed the case we are fine with this the plan. Could we please have some additional dimensions for the roadways and service areas?

---

This email has been scanned for spam and viruses by Proofpoint Essentials. Click [here](#) to report this email as spam.