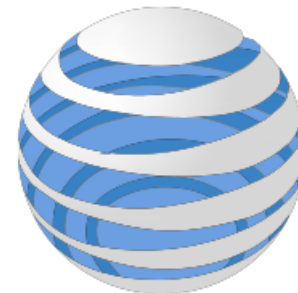


Eligible Facilities Request

To modify an existing Crown Castle tower and wireless facility
AT&T's proposed installation

8247 W. State Street, Garden City, ID
Design Review Commission hearing

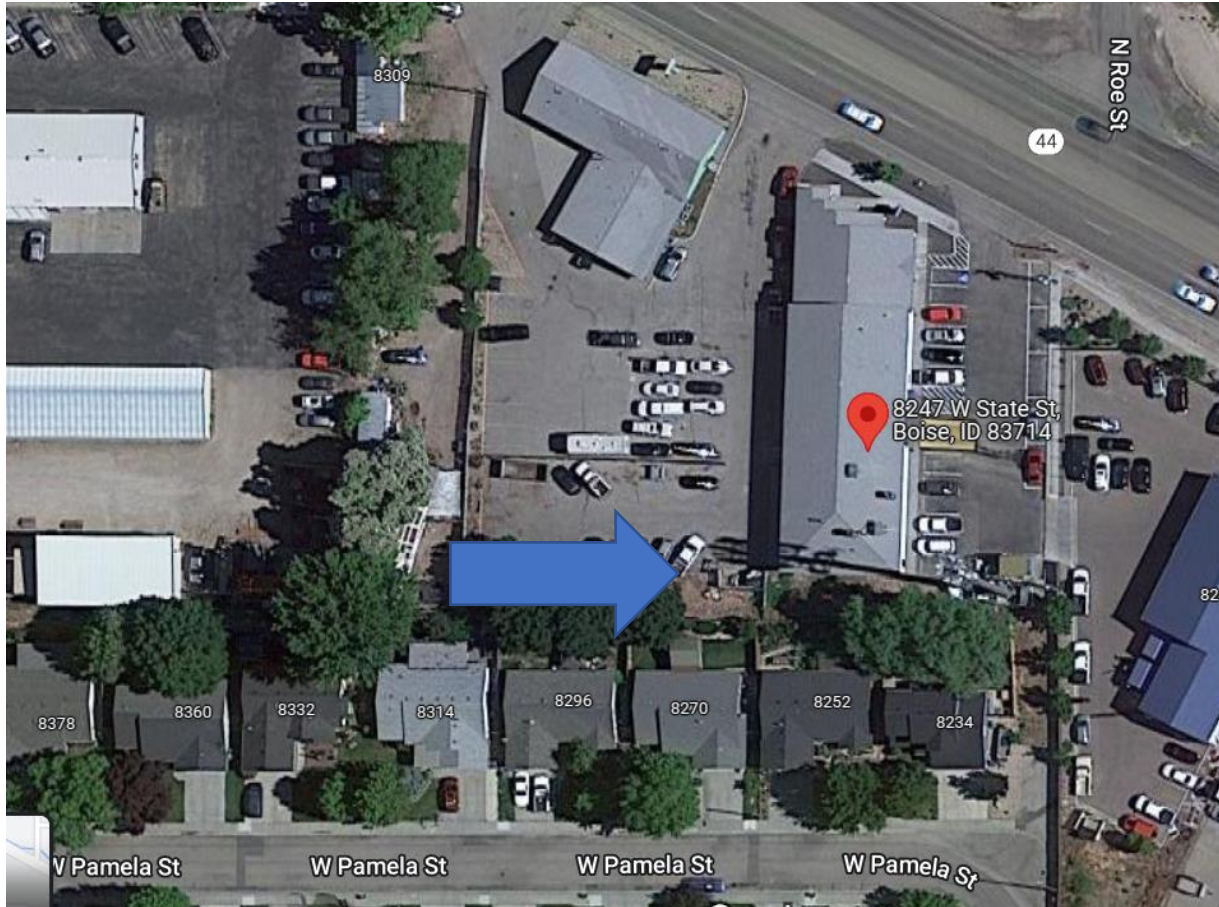
December 19, 2022



at&t
Mobility

8247 W. State Street, Garden City, ID

Crown Castle maintains an existing tower and facility at this site



LOCATION MAP



SUBJECT TOWER LOOKING SOUTH FROM W. STATE ST.

Subject tower:

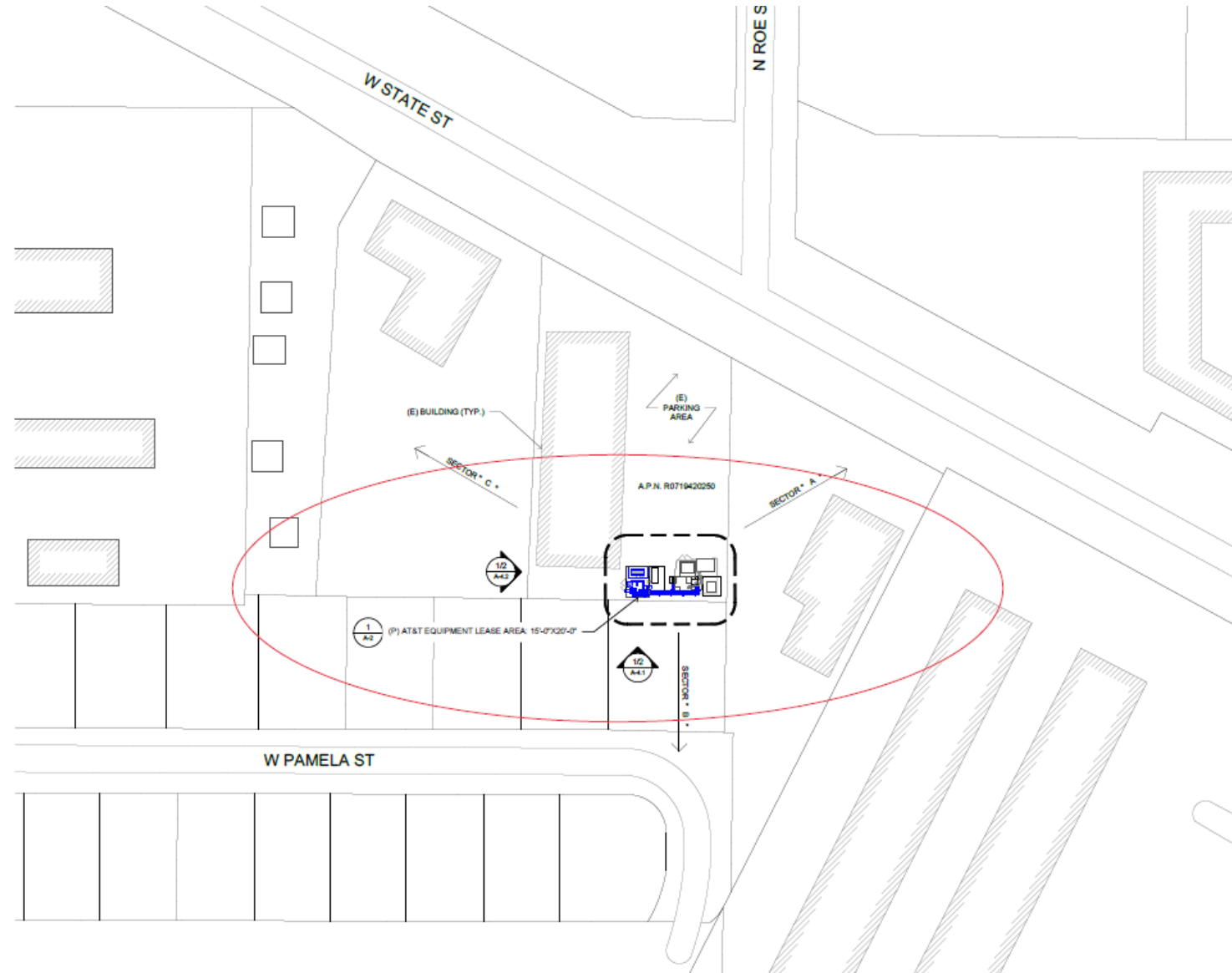


SUBECT TOWER LOOKING SOUTHWEST FROM W. STATE ST.



SUBJECT TOWER LOOKING SOUTHEAST FROM W. STATE ST

OVERALL SITE PLAN:

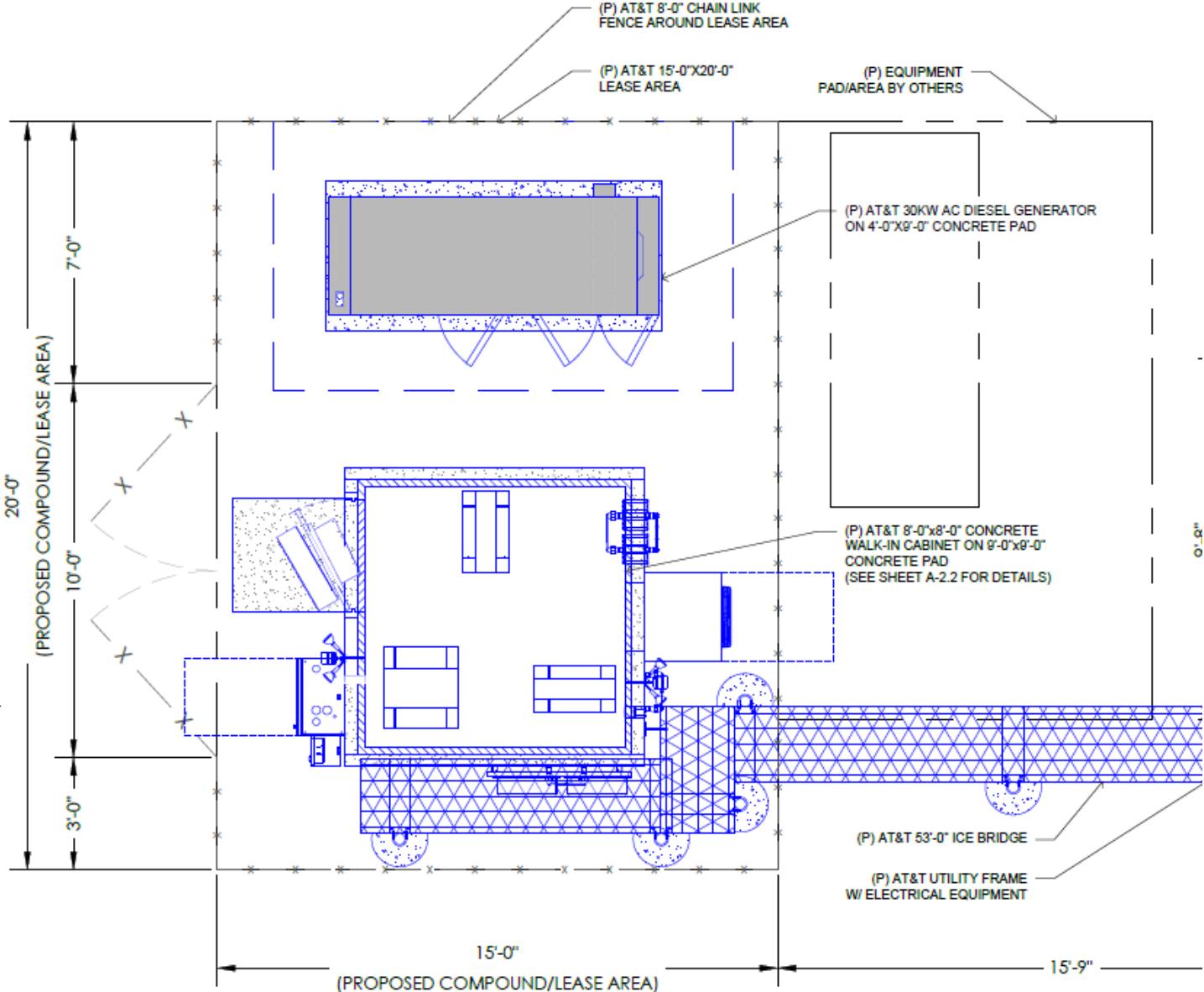
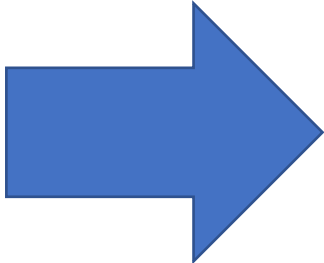


AT&T's proposed installation for review by the Garden City Design Review Commission:

- AT&T proposes to collocate at this existing tower and facility –
 - The proposal includes an 8' x 8' walk in cabinet for AT&T's radios and associated equipment

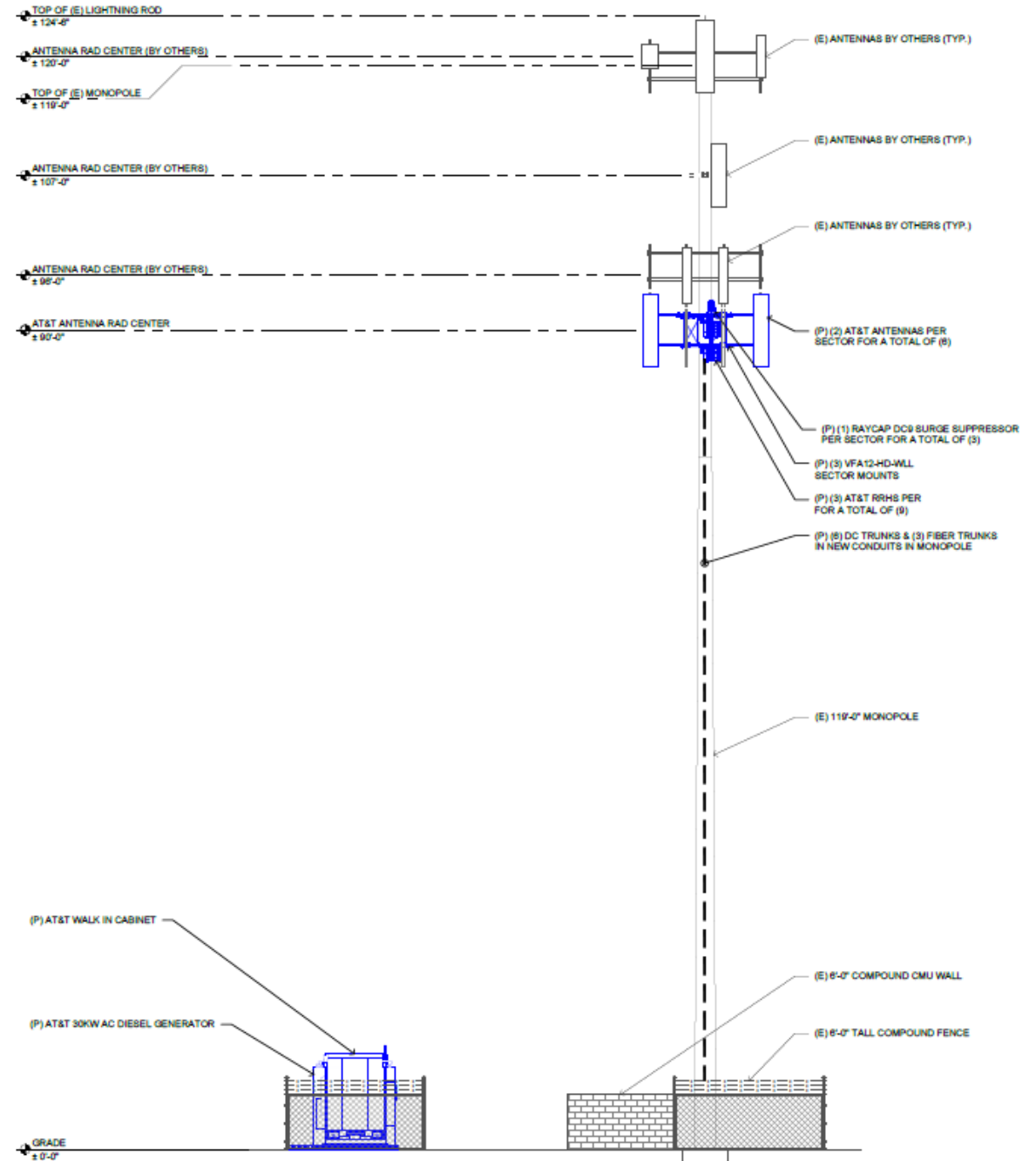
AT&T's
site plan:

8' x8' walk in
cabinet



AT&T

- ELEVATION
- 8' x 8'
- walk in
- cabinet



Proposed 8' x 8' walk in equipment cabinet details:

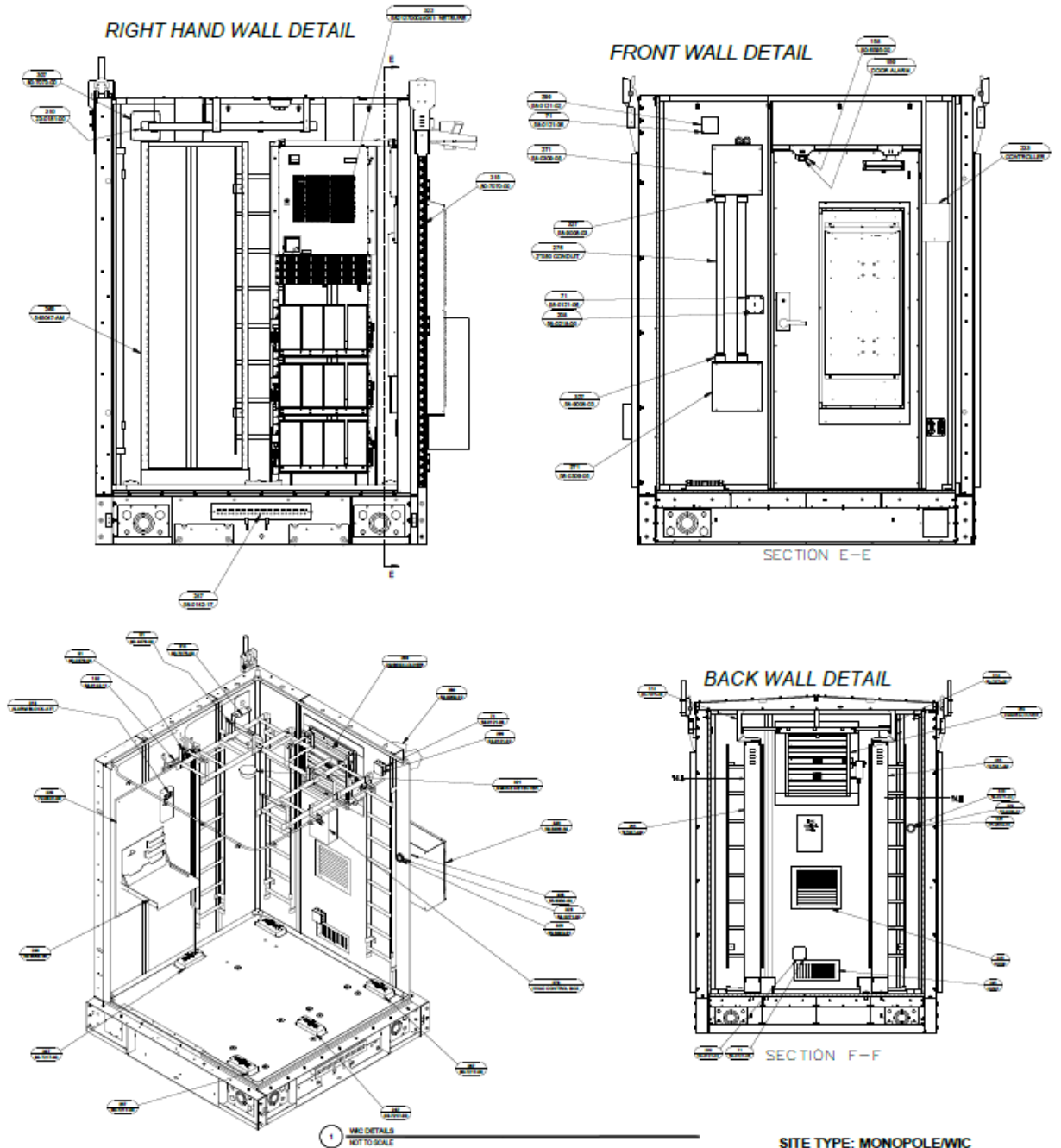


Photo showing AT&T's proposed equipment area:



Proposal is an Eligible Facilities Request under Federal Communications Commission Section 6409

- Under Federal Communications Commission Section 6409, an Eligible Facilities Request (“EFR”) is entitled to streamlined processing under the shot clock rules and the proposal can’t be conditioned or denied.
- The subject application, which includes installing an 8’ x 8’ walk in cabinet in a 15’ x 20’ enclosure meets all requirements of an EFR.