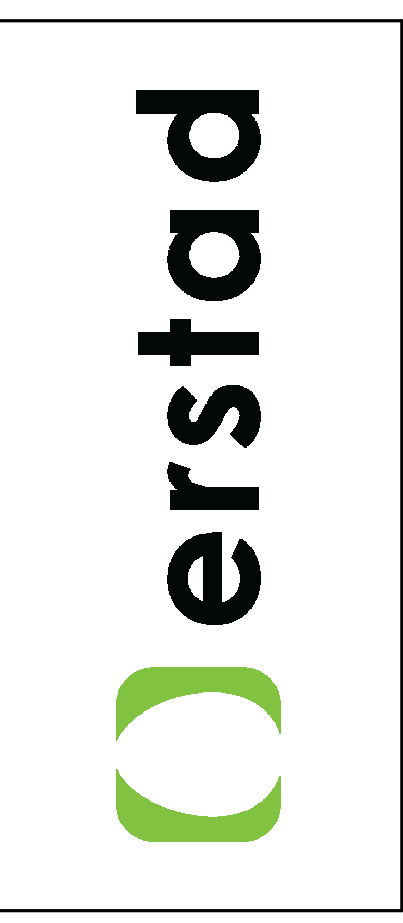


NOT FOR CONSTRUCTION



This document is the property of erstad ARCHITECTS and is protected by U.S. and international laws. Use, reproduction, or modification of this document without first obtaining written permission of erstad ARCHITECTS is prohibited. This document may not be used in any unauthorized manner. ©2022

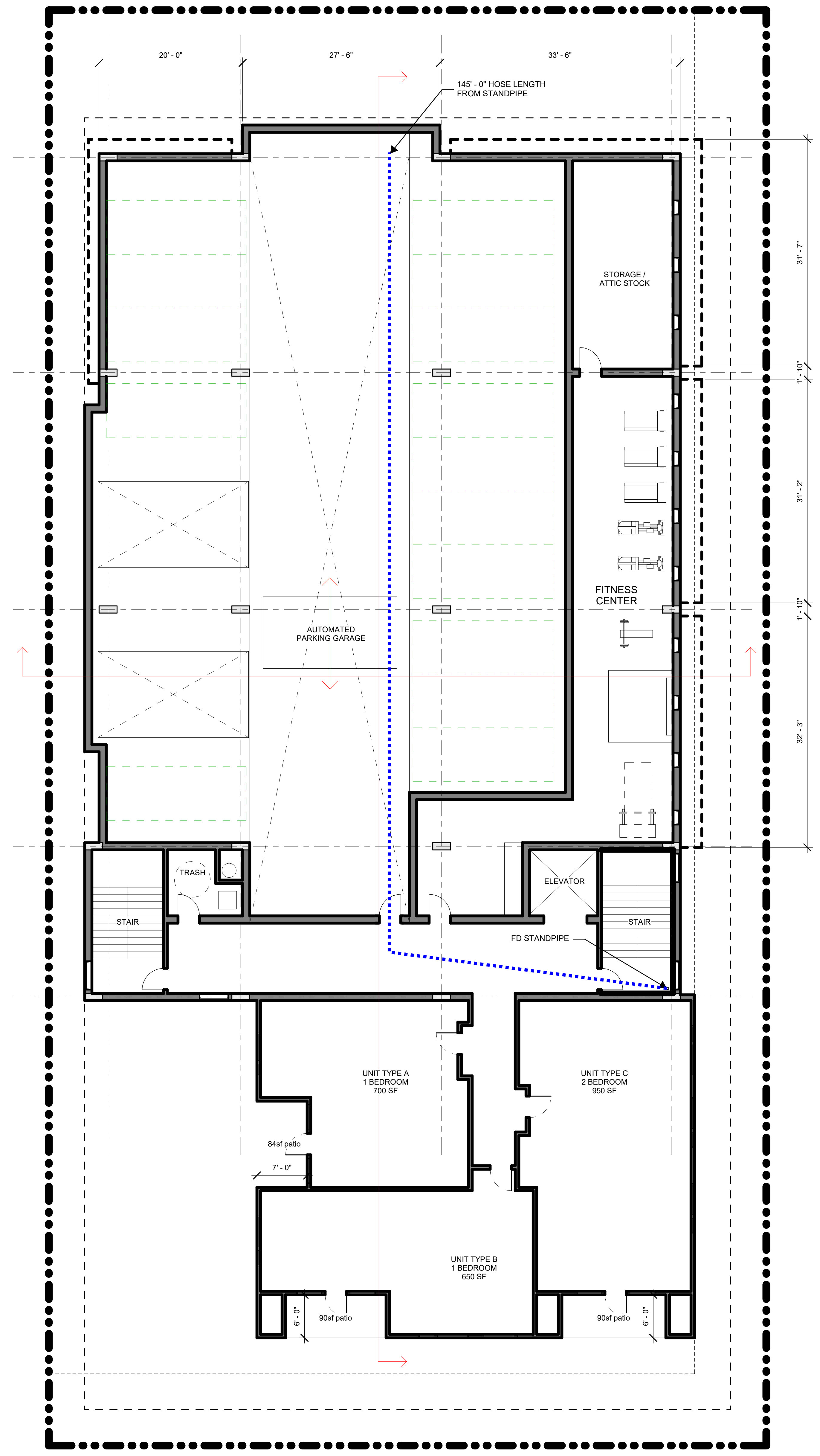
adams street apartments
4044 adams street, garden city, idaho

revision:		
no.	desc.	date

project: 220406
date: 10.17.22

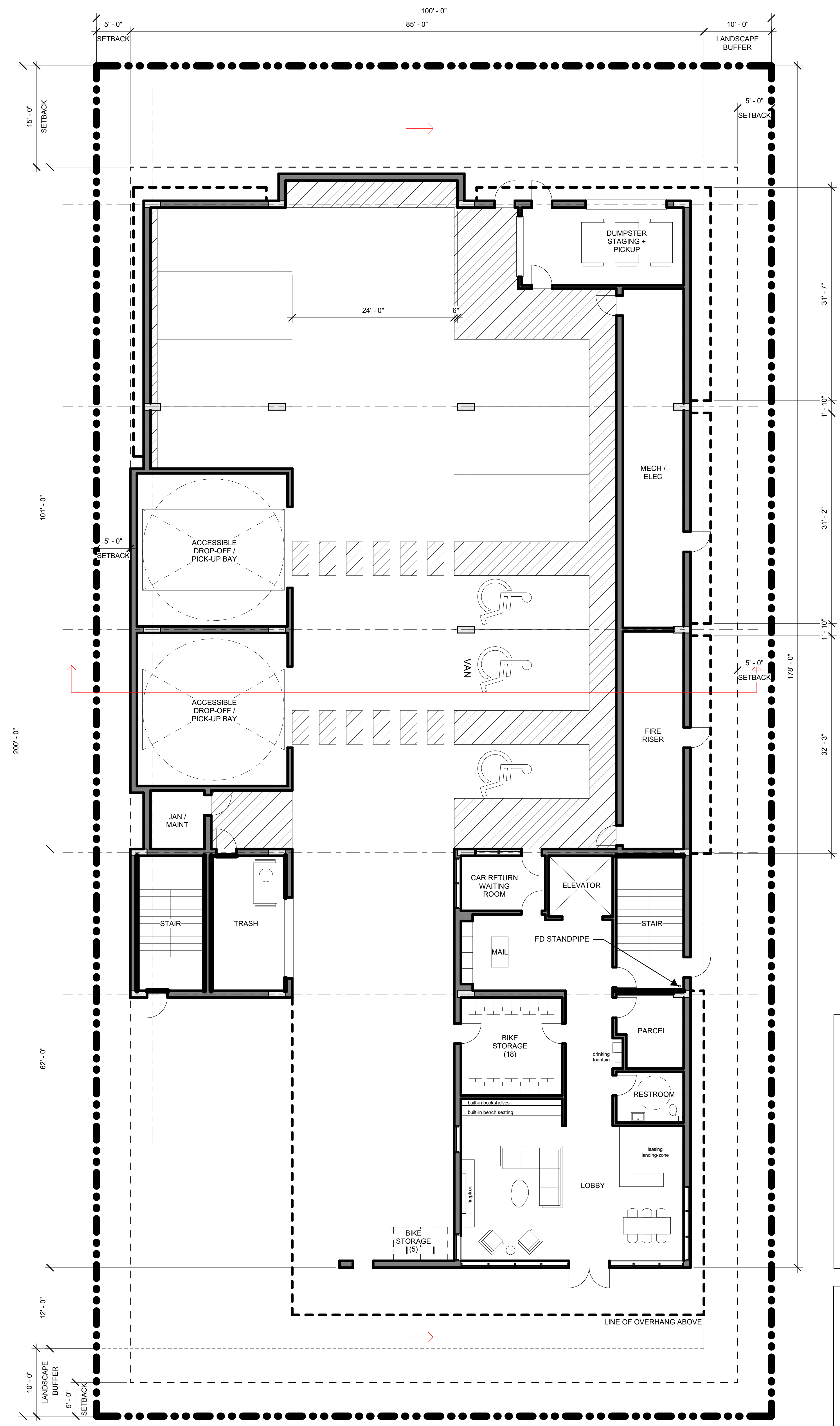
design review pre-app

first + second floor plans
A2.1



second floor
1/8" = 1'-0"

15 automated parking spaces
3 units



first floor
1/8" = 1'-0"

10 parking spaces

keynote

general notes

- CONTRACTOR TO VERIFY ALL DIMENSIONS IN FIELD. NOTIFY ARCHITECT IF DISCREPANCIES ARE FOUND.
- GYPSUM WALLBOARD APPLICATION & FINISHING AT ALL EXPOSED SURFACES TO COMPLY WITH SPECIFICATIONS.
- UNLESS NOTED OTHERWISE, ALL EXTERIOR WALLS ARE DIMENSIONED TO FACE OF FOUNDATION / GRID LINE.
- UNLESS NOTED OTHERWISE, ALL PARTITIONS ARE DIMENSIONED TO FACE OF STUD.
- UNLESS DIMENSIONED OTHERWISE, INTERIOR DOORS SHALL BE LOCATED 4" FROM ADJACENT PARTITION.