

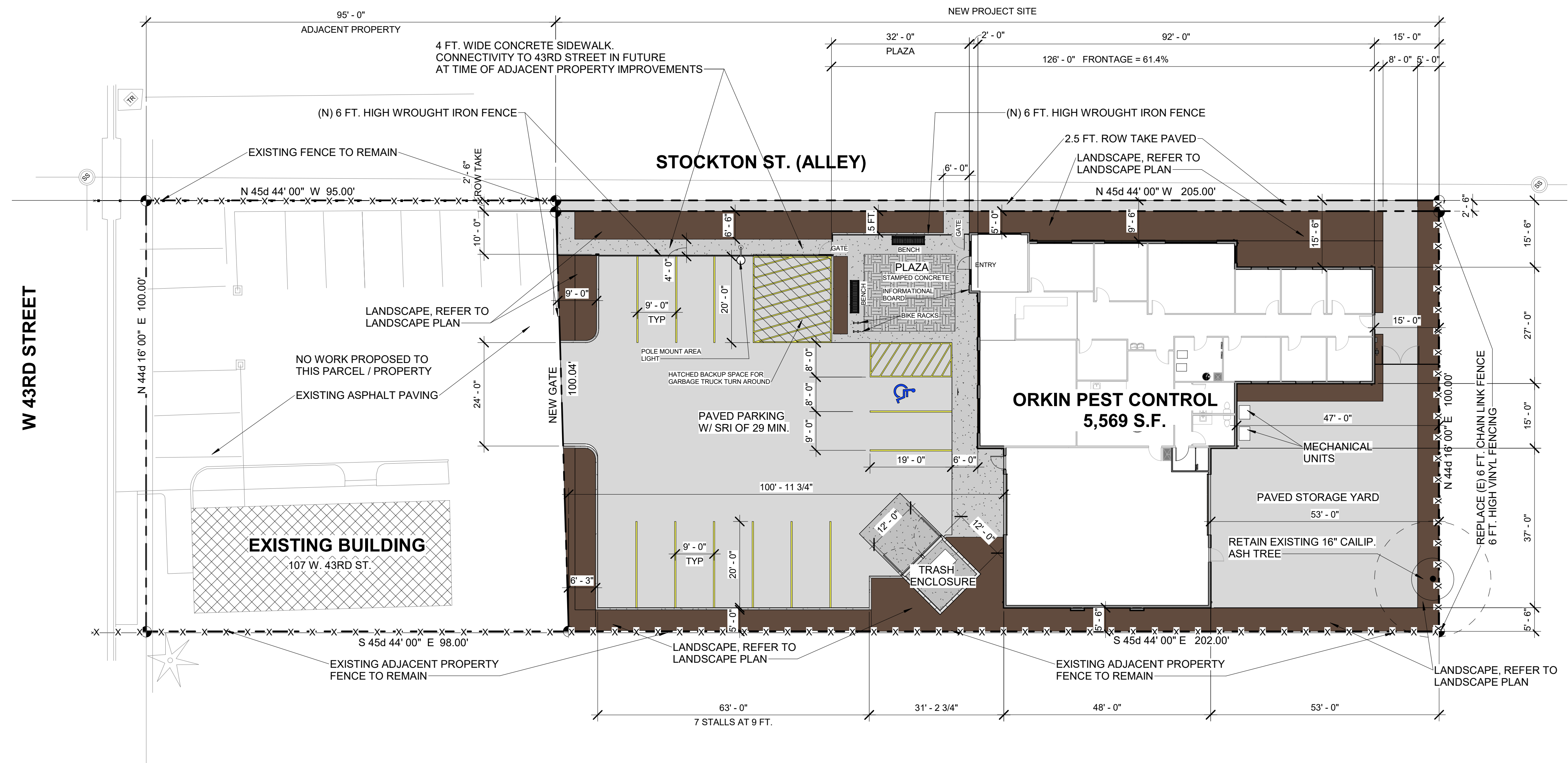
LOG OF SITE AREAS

1. SITE COVERAGE AREAS	
-TOTAL SITE AREA - 20,347 S.F. OR .467 ACRES	
-STOCKTON STREET ROW TAKE BY ACHD	512 S.F.
-BUILDING AREA:	5,569 S.F.
-PAVED AREA:	8,759 S.F.
-PLAZA:	814 S.F.
-SIDEWALKS / CONCRETE APRONS / TRASH ENCLOSURE:	1,089 S.F.
-LANDSCAPE AREA:	3,848 S.F.
2. LANDSCAPE: (ALL NEW)	
INTERIOR LANDSCAPE AREA REQUIRED (5% OF TOTAL SITE).....	1,018 S.F.
INTERIOR LANDSCAPE AREA PROVIDED.....	1,227 S.F.
PERIMETER LANDSCAPE AREA.....	2,621 S.F.
TOTAL LANDSCAPE (PERIMETER & INTERIOR).....	3,848 S.F. (18.9%)

PARKING ANALYSIS

- 7-9 OFFICE EMPLOYEES
- BUSINESS OFFICE HOURS ARE 7AM-6PM MONDAY THRU FRIDAY
- AVERAGE OF ONE (1) WALK-IN CUSTOMER PER DAY. MOST SCHEDULES BY PHONE
- NO REGULAR SHIPPING / DELIVERY SCHEDULE
- PROPOSED PARKING - 13 STALLS TO INCLUDE ONE (1) HANDICAP STALL
- PER BOISE CITY PARKING CODE: 3,793 S.F. / 300 = 12.6 STALLS REQUIRED

VICINITY MAP / KEY PLAN



1 SITE PLAN
1/16" = 1'-0"

REVISIONS:

K2 INC. CONSTRUCTION
GENERAL CONTRACTORS
CONSTRUCTION MANAGERS
8555 Hackamore Drive, STE. 200 - Boise, Idaho 83709-1665
Phone: 208-377-9139 - Fax: 208-377-9149

CONSULTANT
jgt architecture
1212 12th Avenue South
Nampa, Idaho 83651
Phone: 208-463-9295
Fax: 208-463-9299

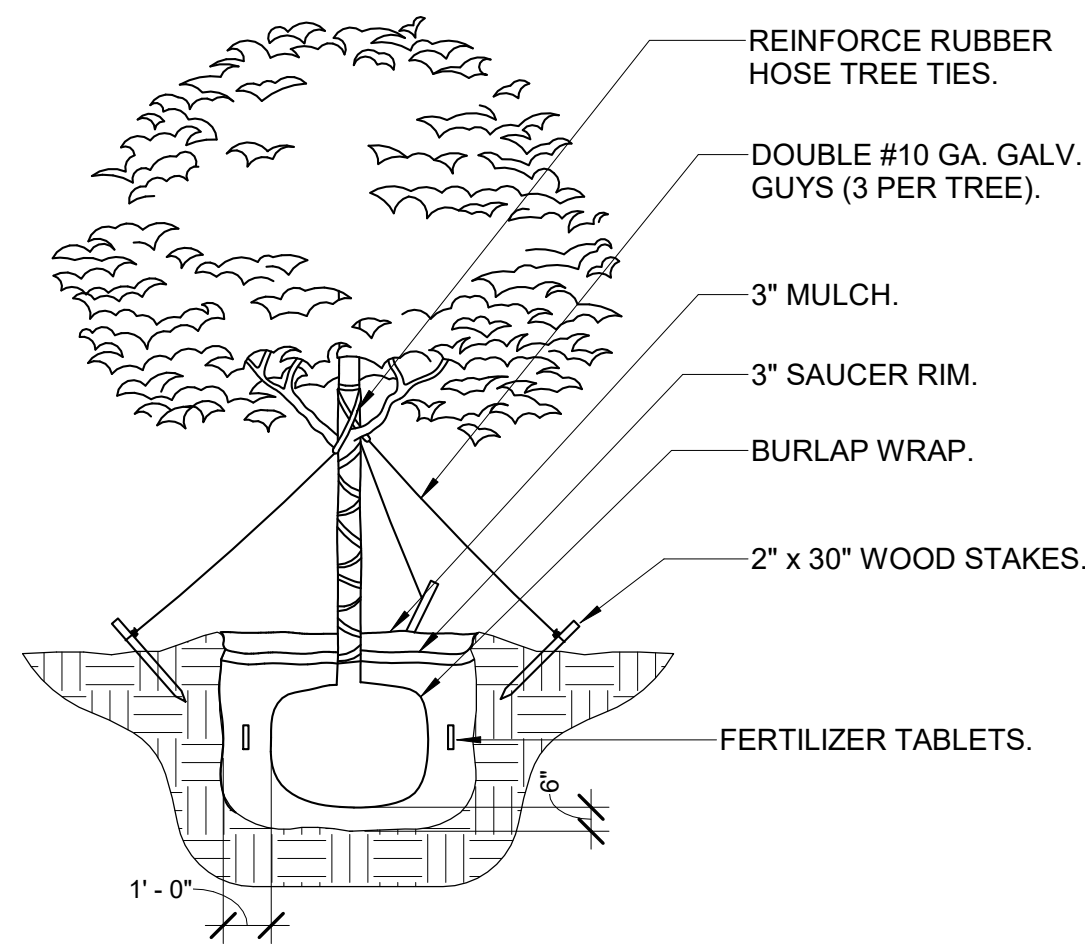
STAMP
LICENSED ARCHITECT
AR-1657
NOT FOR CONSTRUCTION
J. GREGORY TOOLSON
STATE OF IDAHO

OFFICE FACILITY
FOR
ORKIN PEST CONTROL
GARDEN CITY

DRAWN BY: JGT
CHECKED BY: JGT
DATE: 10/7/21
JOB NO.: 2133

DR SITE PLAN

DR-1
SHEET
OF



TYPICAL TREE AND SHRUB PLANTING NOTES:

1. ALL TREES TO BE BALLED AND BURLAPPED. SEE DETAIL
2. 2" MINIMUM OF REGULAR GRIND SOIL AID TO BE PLACED ON SHRUB PLANTING AREAS.
3. PROVIDE AND INSTALL (3) 2 x 2 STAKES EVENLY SPACED AT EACH TREE. TIE ALL STAKES WITH COTTON WEBBING OR OTHER APPROVED METHOD.
4. PROVIDE AND INSTALL BACKFILL MIX FOR ALL PLANTS. USE 1/2 APPROVED PLANTING MIX AND 1/2 EXISTING SOIL REMOVED FROM PLANTING PITS. DIG ALL PLANT PITS TWICE THE SIZE OF ROOT BALL.
5. EXISTING SOIL REMOVED FROM PLANTING PITS. DIG ALL PLANT PITS TWICE THE SIZE OF ROOT BALL.
6. FINISH GRADE TOP SOIL TO A UNIFORM AND SMOOTH SURFACE. REMOVE ALL ROCKS AND FOREIGN MATERIAL 1" AND LARGER PRIOR TO LAYING SOD
7. PROVIDE AND INSTALL ONE APPLICATION OF APPROVED PLANTING TABLETS FOR ALL PLANTS. PROVIDE AND INSTALL ONE INITIAL APPLICATION OF STARTER FERTILIZER FOR SOD AREAS. ALL FERTILIZERS TO BE APPROVED BY THE OWNER PRIOR TO APPLICATION AND APPLIED AT MANUFACTURERS RECOMMENDED RATE.
8. ALL PLANTS AND LAWN SHALL BE GUARANTEED FOR ONE COMPLETE GROWING SEASON AFTER COMPLETION OF CONTRACT AND FINAL ACCEPTANCE.
9. NEW LANDSCAPE AREAS TO BE PROVIDED WITH FULLY AUTOMATIC SPRINKLER SYSTEMS - DRIP IRRIGATION ONLY

2 TREE PLANTING

1/4" = 1'-0"

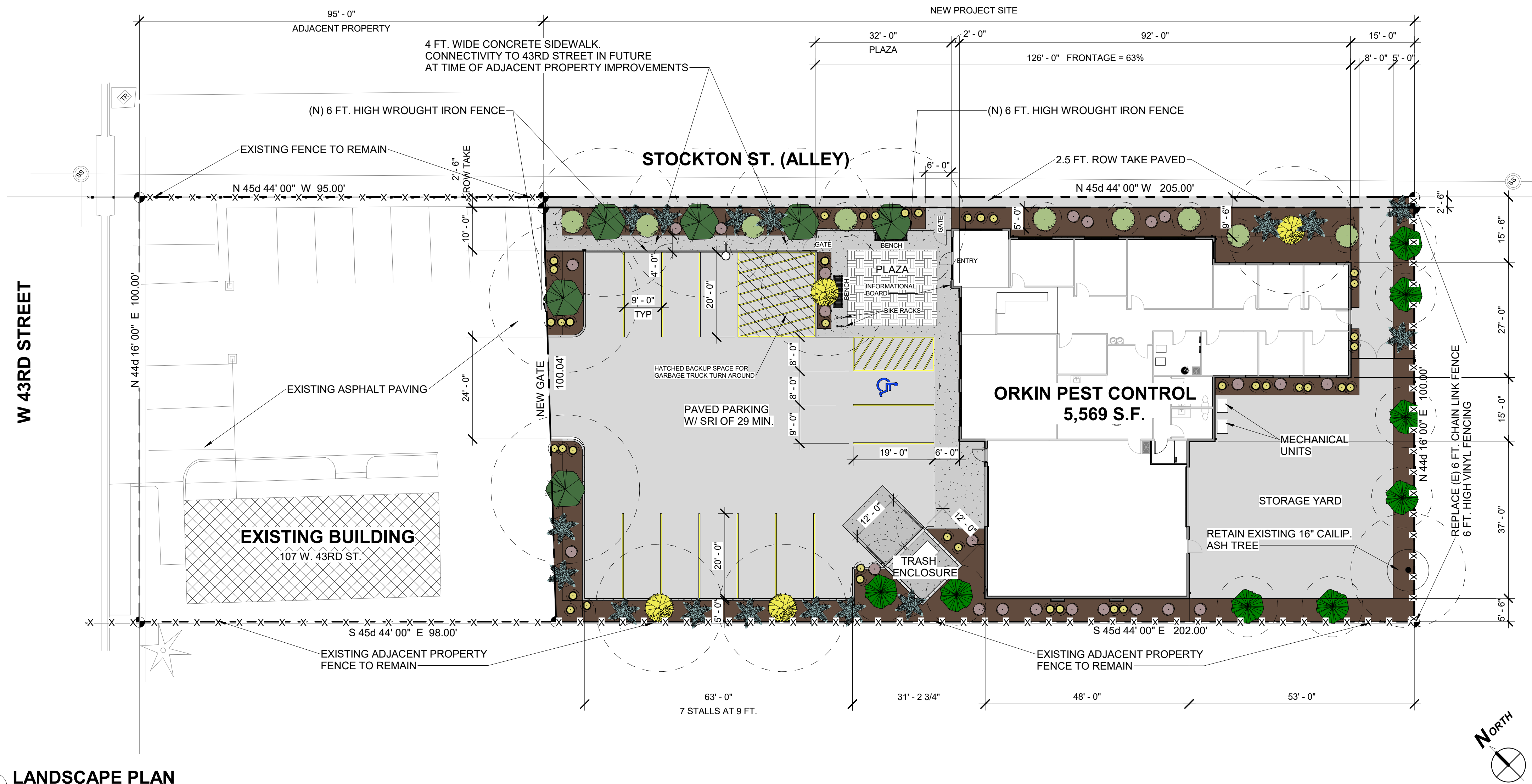
LANDSCAPE LEGEND

QTY	COMMON NAME	SCIENTIFIC NAME	SYM.	SIZE AT PLANTING	SIZE AT MATURITY	TREE CLASS
8	GREEN GIANT ARBORVITAE	<i>Thuja standishii x plicata</i>		4 FT. TALL	50 FT. TALL x 15 FT. SPREAD	CONIFER
6	NORWAY MAPLE	<i>Acer platanoides</i>		2" CALIP. B and B	50 FT. TALL x 35 FT. SPREAD	CLASS II
4	THORNLESS HONEY LOCUST	<i>Gleditsia triacanthos var. inermis</i>		2" CALIP. B and B	50 FT. TALL x 40 FT. SPREAD	CLASS II
16	BLUE RUG JUNIPER	<i>Juniperus horizontalis</i>		2 GAL.	6" TALL x 6 FT. SPREAD	
9	BURNING BUSH	<i>Euonymus alatus</i>		2 GAL.	6 FT TALL x 8 FT. SPREAD	
23	CRIMSON PYGMY BARBERRY	<i>Berberis thunbergii</i>		2 GAL.	2 FT TALL x 3 FT. SPREAD	
40	KARL FOERSTER GRASS	<i>Calamagrostis acutiflora</i>		1 GAL.	5 FT TALL x 3 FT. SPREAD	

NOTES:
 ALL LANDSCAPE AREAS TO RECEIVE ROCK OR WOOD MULCH OVER LANDSCAPE FABRIC.
 IRRIGATION TO BE DESIGN BUILT BY LANDSCAPE CONTRACTOR. ALL IRRIGATION TO BE BE DRIP IRRIGATION
 DASHED LINE ON PLANT SYMBOL INDICATES MATURE SIZE. SMALLER SIZE SHOWN FOR CLARITY

TREES

SHRUBS



1 LANDSCAPE PLAN

1/16" = 1'-0"

REVISIONS:

K2 INC. CONSTRUCTION
 GENERAL CONTRACTORS
 CONSTRUCTION MANAGERS
 8555 Hackamore Drive, STE. 200 - Boise, Idaho 83709-1665
 Phone: 208-377-9139 - Fax: 208-377-9149

CONSULTANT

jgt architecture
 1212 12th Avenue South
 Nampa, Idaho 83651
 Phone: 208-463-9295
 Fax: 208-463-9299

STAMP

 LICENSED ARCHITECT
 AR-1657
NOT FOR CONSTRUCTION

OFFICE FACILITY
 FOR
 ORKIN PEST CONTROL
 GARDEN CITY

DRAWN BY: JGT
 CHECKED: JGT
 DATE: 10/7/21
 JOB NO.: 2133

DR LANDSCAPE PLAN

DR-1.1
 SHEET
 OF