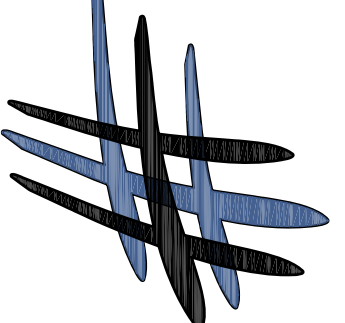


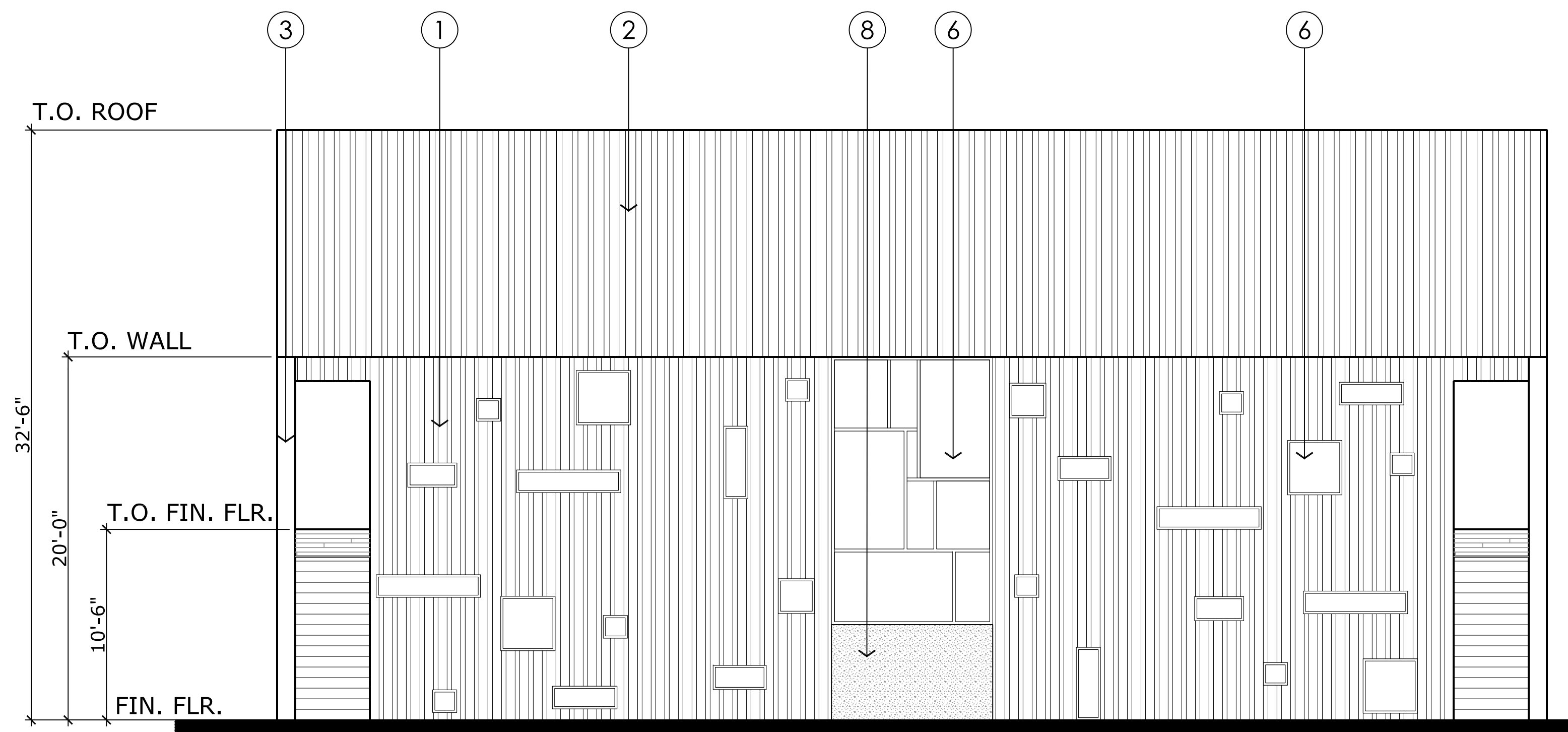
KEYNOTES

- ① MATTE BLACK METAL WALL PANEL SIDING
- ② MATTE BLACK METAL STANDING SEAM ROOF
- ③ MATTE BLACK METAL FACIA
- ④ HORIZONTAL WOOD SIDING
- ⑤ MATTE BLACK DOOR
- ⑥ BLACK ANODIZED ALUMINUM WINDOW
- ⑦ BLACK POWDER COATED STEEL RAILING
- ⑧ TEXTURED GREY CONCRETE

HATCH DESIGN
ARCHITECTURE
673 W. STATE ST.
BOISE, IDAHO 83703
OFFICE: (208) 475-3204
FAX: (208) 475-3205
COPYRIGHT 2020
HATCH DESIGN
ARCHITECTURE

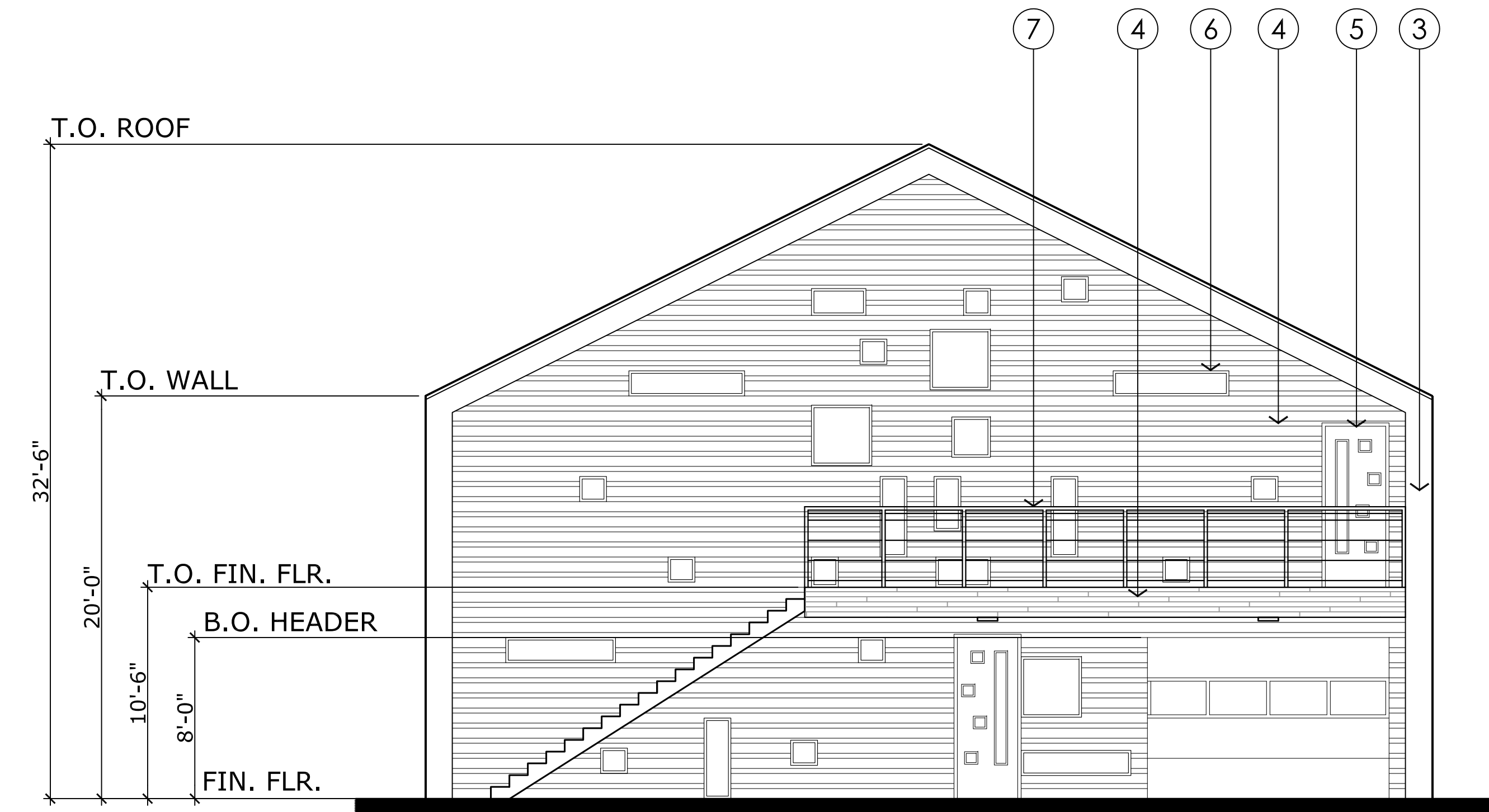


THIS PLAN AND/OR DESIGN ARE NOT TO BE CHANGED OR COPIED IN ANY FORM, NOR ARE THE DOCUMENTS TO BE REPRODUCED OR TRANSMITTED IN ANY MANNER WITHOUT THE ORIGINAL LETTER OF AGREEMENT, CONTRACT, SPECIFICATIONS, DRAWINGS, SPECIFICATIONS AND OTHER DOCUMENTS. THE DESIGNER AND THE DESIGNER CONSULTANTS ARE NOT RESPONSIBLE FOR ANY CONSEQUENCES THAT MAY RESULT FROM THIS PROJECT. THE DESIGNER AND THE DESIGNER CONSULTANTS ARE NOT RESPONSIBLE FOR ANY CONSEQUENCES THAT MAY RESULT FROM THIS PROJECT. THE DESIGNER AND THE DESIGNER CONSULTANTS ARE NOT RESPONSIBLE FOR ANY CONSEQUENCES THAT MAY RESULT FROM THIS PROJECT.



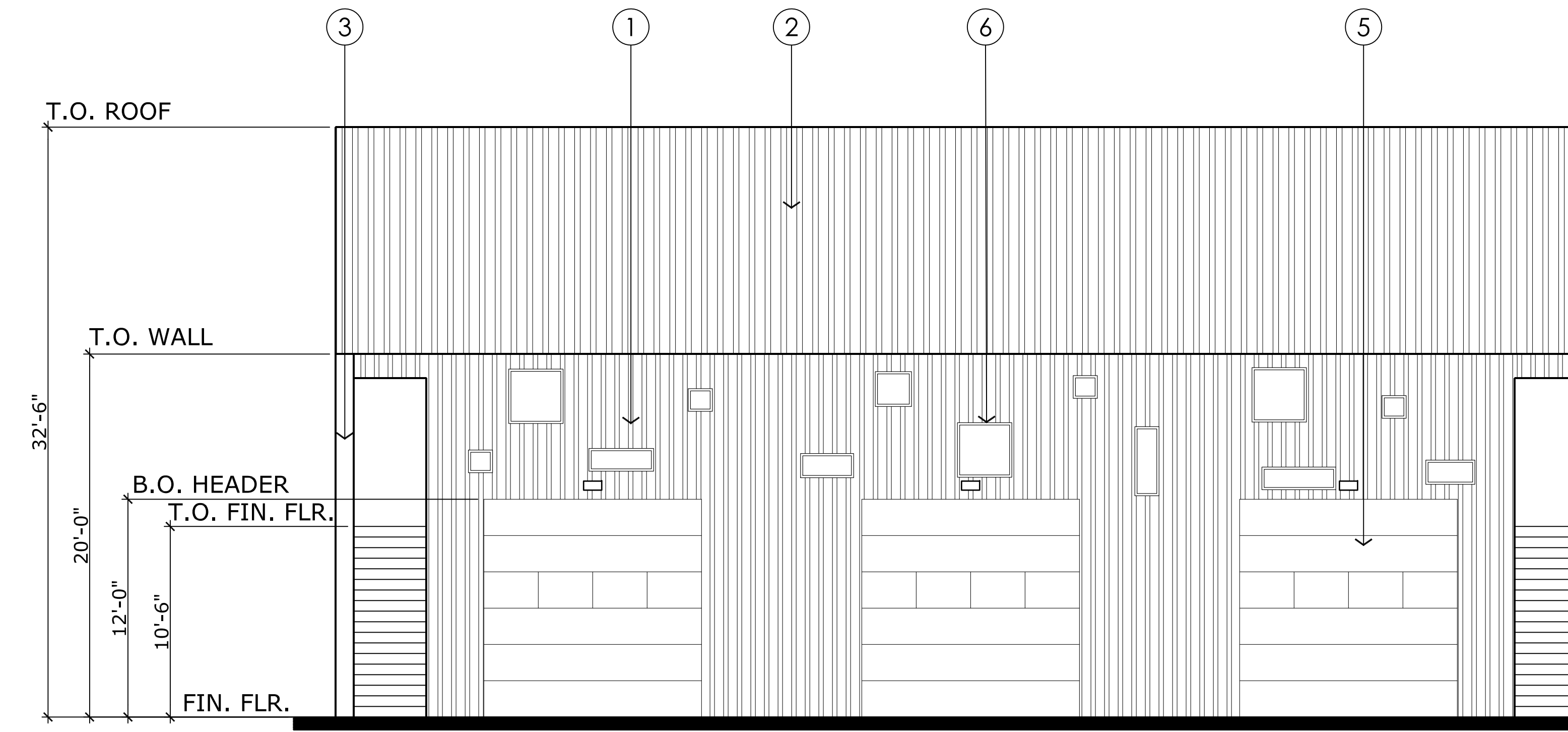
NORTH ELEVATION

SCALE: 3/16" = 1'-0"



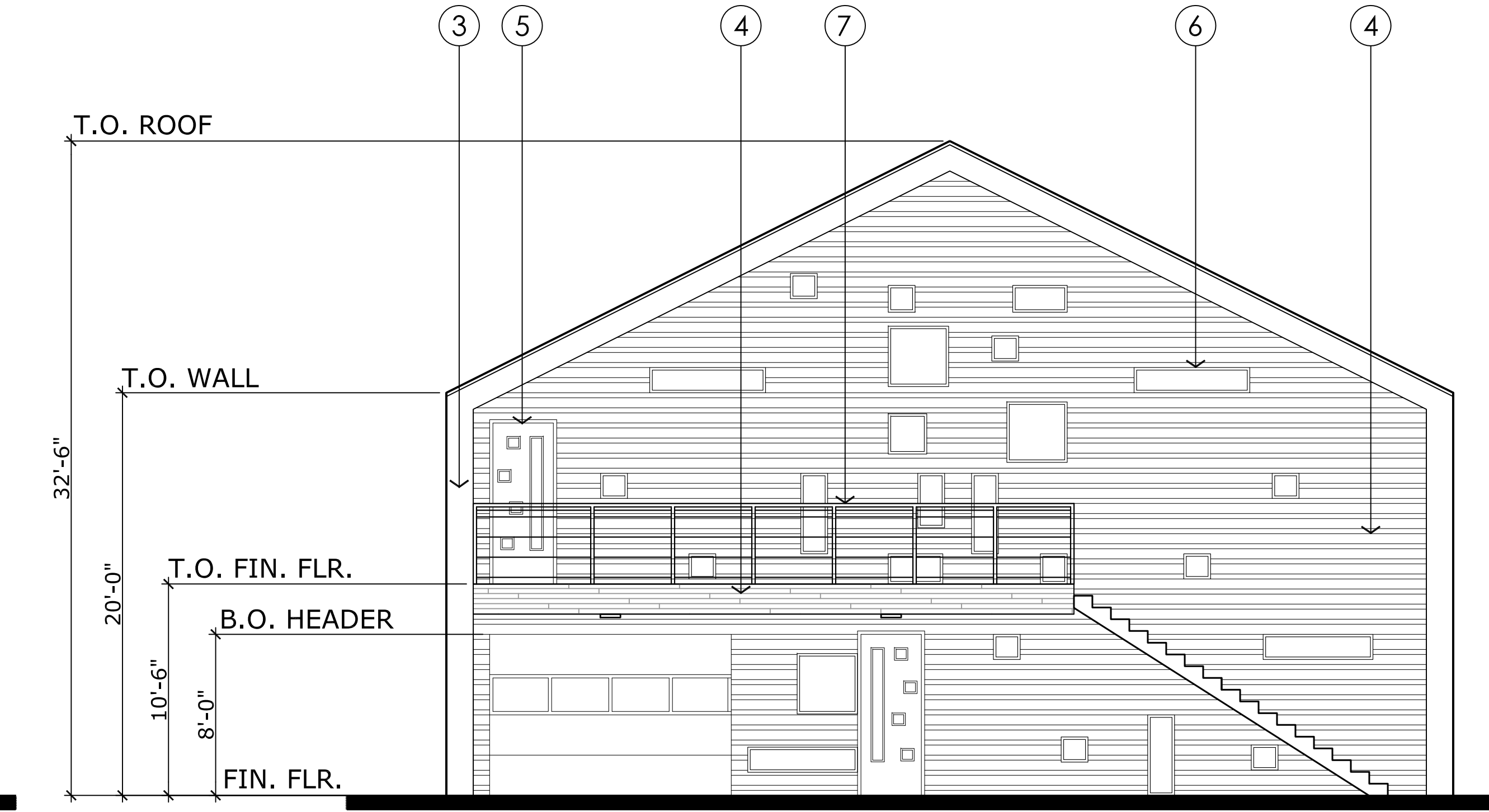
EAST ELEVATION

SCALE: 3/16" = 1'-0"



SOUTH ELEVATION

SCALE: 3/16" = 1'-0"



WEST ELEVATION

SCALE: 3/16" = 1'-0"

NEW COMMERCIAL DEVELOPMENT:
CANTU
AT MAPLE GROVE
CHINDEN BLVD. AND MAPLE GROVE ROAD
GARDEN CITY, ID 83714

DATE	DESCRIPTION/COMMENTS

DATE: SEPT 2020
DRAWN BY: MAD
CHECKED BY: JLH
JOB NUMBER: TKMS 101

SHEET TITLE
**EXTERIOR
ELEV'S &
SPEC'S**

SHEET NUMBER
A-4.0