

Horticulturist / Arborist Consultant

2040 Varian place
Boise, Idaho 83709

Gary D. Moen

(208) 376-1922
lgmoen@gmail.com

Hatch Design Architecture 200 W. 36th Street Garden City, Idaho, 83714

1/15/2025

Assignment:

Jeffery Hatch, of Hatch Design Architecture, requested my services to execute a Tree Survey for Star Bucks' The site is located at the NW corner of the intersection of Chinden Blvd and 52nd street Garden City, ID 83714.

This Plant Survey includes: 1. Tree Inventory from on-site Data Collection; determining the *Genus* and *species*, tree size in caliper inch, height and canopy width in feet, and a determination of each tree's condition. 2. Photograph of each plant. 3. A generalized field map of plant's location.

This tree assessment was for the four trees found on said property.

Data Collection:

1/17-2025

General Response:

The said property has two existing trees live and two trees were found dead. The condition of the two live trees were found dying and or were in extremely poor condition.

It appeared that the landscape plants had been totally neglected for a long period of time. Please observe the plant photographs and plot map.

1/31/2025

I certify that all statements of fact in this report are true, complete, and correct to the best of my knowledge and belief, and that they are made in good faith.

Horticulturist – INLA CNP CPD Arborist - ISA Tree Risk Assessor

Gary Moen

Tree Survey – Star Bucks – 52nd and Chinden Blvd, Garden City ID 84714

1.) *Pinus nigra* – Austrian Pine, 38” DBH, 54’ height, Condition DYING.



The Austrian Pine will be **hazardous to an Arborist** if cut down with a Chainsaw. There is a chain wrapped around one of the stems causing it to be girdled.

Tree Survey – Star Bucks – 52nd Street and Chinden Blvd, Garden City, ID 84714

2.) *Thuja occidentalis* – Pyramidal Arborvitae, five stems 3”-7” DBH, 28’ height, Condition DEAD.



Tree Survey – Star Buck’s, 52nd Street and Chinden Blvd Garden City, ID 84714

3.) *Thuja occidentalis* – Pyramidal Arborvitae, four stems 3” DBH, 28’ height. Cond. DEAD.



Tree Survey – Star Bucks, 52nd Street and Chinden, Garden City, ID 84714

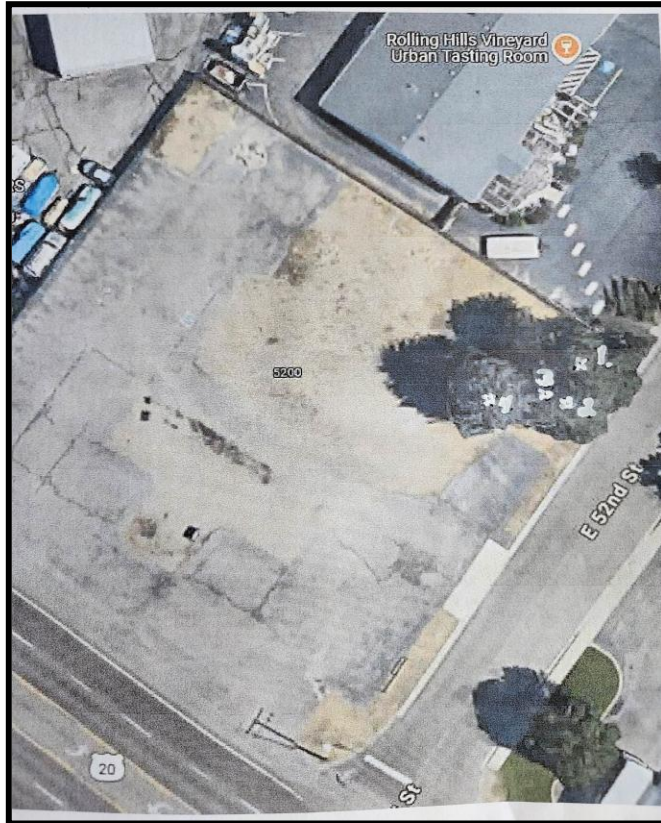
4.) *Picea pungens* – Colorado Blue Spruce, 20” DBH, 50’ height. Condition POOR to DYING.



4.) Top is dead, needles are very short, many dead branches and the tree has two codominant leaders. The tree is centered in the photo.

TREE SURVEY – STAR BUCKS – MAP

Trees are numbered 1 through 4 in white



SUMMARY – TREE SURVEY – STAR BUCKS

Total #	Sci. Name:	Common Name:	Condition:
(1)	<i>Pinus nigra</i>	Austrian Pine	DYING
(2)	<i>Thuja occidentalis</i>	Pyramidal Arborvitae	DEAD
(1)	<i>Picea pungens</i>	Colorado Blue Spruce	DYING

1/31/2025

I certify that all statements of fact in this report are true, complete, and correct to the best of my knowledge and belief, and that they are made in good faith.

Horticulturist – INLA, CNP, CPD; Arborist - ISA Tree Risk Assessor

Gary Moen